

32341

File No. 119-5148
ER/VO No. 13493UNDERGROUND
RIGHT-OF-WAY EASEMENT
(Corporate)

VOL 323 PAGE 142

For value received, Mammoth Lakes Corp.
a OREGON corporation, hereinafter referred to as Grantor, does hereby
grant to PACIFIC POWER & LIGHT COMPANY, a corporation, its successors and assigns, the
Grantee, an easement or right-of-way, FIVE feet in width, for an electric under-
ground distribution line of one or more conductors and all necessary or desirable
appurtenances (including but not limited to the right to install conduits, surface or
subsurface mounted transformers, surface mounted connection boxes and meter cabinets)
over, under, across and along the following described real property in Deschutes
County, State of OREGON, to wit:

PHASE II, the East KODLL SECTION OF SURPRISE VILLAGE situated
in the SE 1/4 of Sec 12 & The NE 1/4 of Sec 13, T.18S., R. 11E
& The SW 1/4 of Sec. 7, T.18S., R. 12E., W. 11, Deschutes
County, OREGON. Said Easement is to be 5 feet in width
and to be located adjacent to all dedicated streets/roads,

the location and course of said right-of-way, are approximately as
shown on the sketch attached as Exhibit(s) A and by this
reference made a part hereof.

Together with the right of ingress and egress over the adjacent lands of Grantors
in order to install, maintain, repair, replace, rebuild, operate and patrol the under-
ground electric power lines and appurtenances, and to exercise all other rights herein
granted.

Grantor shall have the right to use the lands subject to the above-described
easement for all purposes not inconsistent with the uses and purposes herein set forth;
provided that Grantor shall not build or erect any structure upon right-of-way without
the prior written consent of the Grantee.

All rights hereunder shall cease if and when such line shall have been abandoned.

Dated this 13 day of MAY, 1980.

By: Tim Ward
Vice President MLC (Title)

Attest: J. Ron Martin, Pres.
(Title)

STATE OF Oregon

County of Deschutes

On this 13 day of May, 1980, before me personally appeared
Tim Ward, to me personally known to be the
Vice President of the corporation that executed the within and fore-
going instrument; who, duly sworn, on oath did say: that he is the Vice President
of the corporation that executed the within foregoing instrument; that the
seal affixed to said instrument is the corporate seal of said corporation, and that
said instrument was signed and sealed in behalf of said corporation by authority of
its Board of Directors, and he acknowledged said instrument to be the free act and
deed of said corporation for the uses and purposes therein mentioned.

IN WITNESS WHEREOF, I have hereunto set my hand and official seal the day and
year above written.

Chinda K. Mott
Notary Public for

Residing at

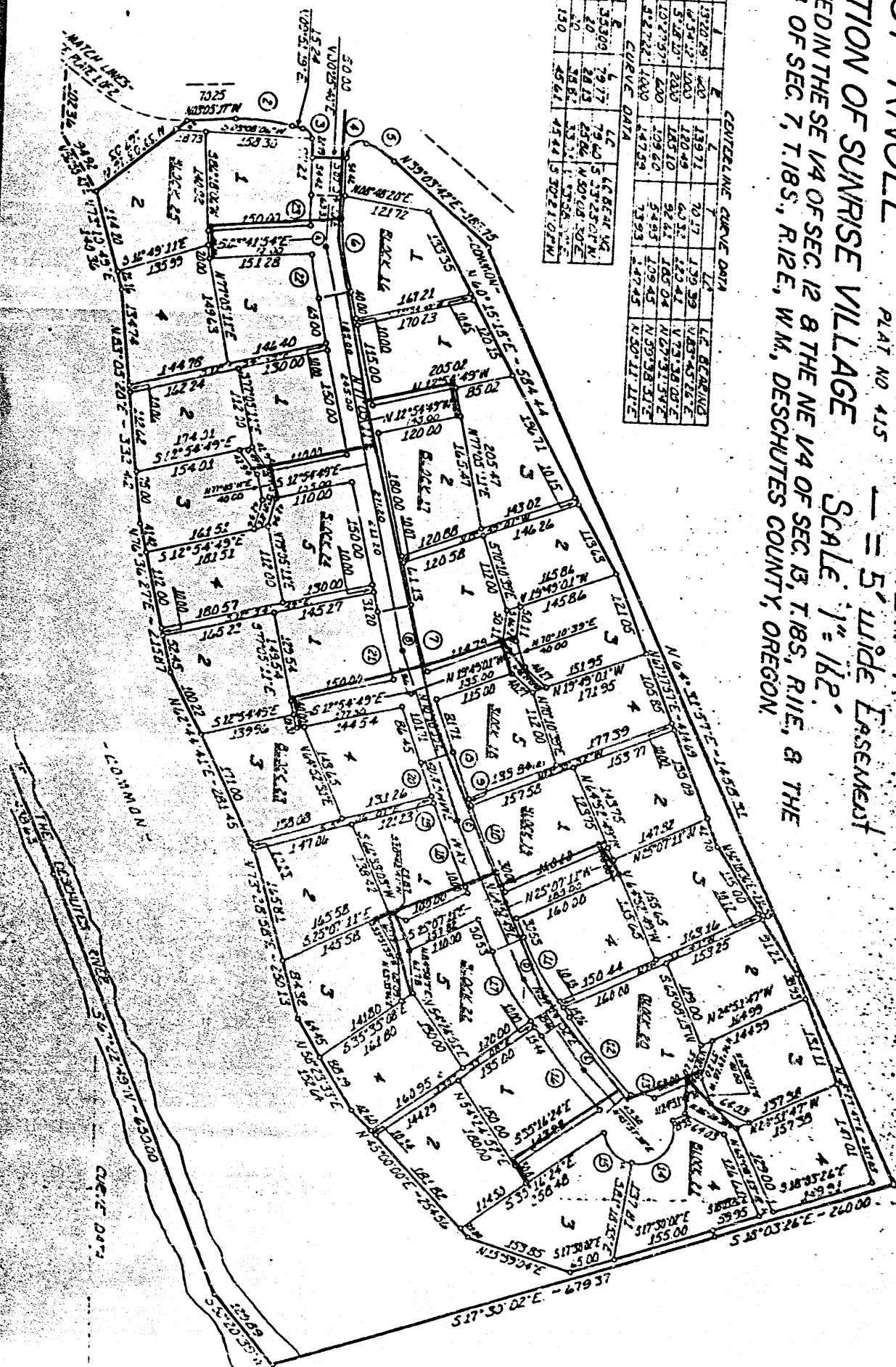
My commission expires: 5/14/84

PLAT NO 415

— = 5' wide EASEMENT

SECTION OF SUNRISE VILLAGE
LOCATED IN THE SE 1/4 OF SEC. 12 & THE NE 1/4 OF SEC. 13, T.18S, R.11E, & THE SW 1/4 OF SEC. 7, T.18S, R.12E, W.M., DESCHUTES COUNTY, OREGON.

CUMULATIVE CURVE DATA				
10	1	2	3	4
1	192.80	439.71	70.17	1.39
2	192.80	439.71	70.17	1.39
3	5.18	140.49	60.31	1.62
4	5.18	140.49	60.31	1.62
5	107.37	280	92.41	1.05
6	587.62	440.5	73.93	1.05
CUMULATIVE CURVE DATA				
10	1	2	3	4
1	192.80	439.71	70.17	1.39
2	192.80	439.71	70.17	1.39
3	5.18	140.49	60.31	1.62
4	5.18	140.49	60.31	1.62
5	107.37	280	92.41	1.05
6	587.62	440.5	73.93	1.05
CUMULATIVE CURVE DATA				
10	1	2	3	4
1	192.80	439.71	70.17	1.39
2	192.80	439.71	70.17	1.39
3	5.18	140.49	60.31	1.62
4	5.18	140.49	60.31	1.62
5	107.37	280	92.41	1.05
6	587.62	440.5	73.93	1.05
CUMULATIVE CURVE DATA				
10	1	2	3	4
1	192.80	439.71	70.17	1.39
2	192.80	439.71	70.17	1.39
3	5.18	140.49	60.31	1.62
4	5.18	140.49	60.31	1.62
5	107.37	280	92.41	1.05
6	587.62	440.5	73.93	1.05
CUMULATIVE CURVE DATA				
10	1	2	3	4
1	192.80	439.71	70.17	1.39
2	192.80	439.71	70.17	1.39
3	5.18	140.49	60.31	1.62
4	5.18	140.49	60.31	1.62
5	107.37	280	92.41	1.05
6	587.62	440.5	73.93	1.05
CUMULATIVE CURVE DATA				
10	1	2	3	4
1	192.80	439.71	70.17	1.39
2	192.80	439.71	70.17	1.39
3	5.18	140.49	60.31	1.62
4	5.18	140.49	60.31	1.62
5	107.37	280	92.41	1.05
6	587.62	440.5	73.93	1.05
CUMULATIVE CURVE DATA				
10	1	2	3	4
1	192.80	439.71	70.17	1.39
2	192.80	439.71	70.17	1.39
3	5.18	140.49	60.31	1.62
4	5.18	140.49	60.31	1.62
5	107.37	280	92.41	1.05
6	587.62	440.5	73.93	1.05
CUMULATIVE CURVE DATA				
10	1	2	3	4
1	192.80	439.71	70.17	1.39
2	192.80	439.71	70.17	1.39
3	5.18	140.49	60.31	1.62
4	5.18	140.49	60.31	1.62
5	107.37	280	92.41	1.05
6	587.62	440.5	73.93	1.05
CUMULATIVE CURVE DATA				
10	1	2	3	4
1	192.80	439.71	70.17	1.39
2	192.80	439.71	70.17	1.39
3	5.18	140.49	60.31	1.62
4	5.18	140.49	60.31	1.62
5	107.37	280	92.41	1.05
6	587.62	440.5	73.93	1.05
CUMULATIVE CURVE DATA				
10	1	2	3	4
1	192.80	439.71	70.17	1.39
2	192.80	439.71	70.17	1.39
3	5.18	140.49	60.31	1.62
4	5.18	140.49	60.31	1.62
5	107.37	280	92.41	1.05
6	587.62	440.5	73.93	1.05
CUMULATIVE CURVE DATA				
10	1	2	3	4
1	192.80	439.71	70.17	1.39
2	192.80	439.71	70.17	1.39
3	5.18	140.49	60.31	1.62
4	5.18	140.49	60.31	1.62
5	107.37	280	92.41	1.05
6	587.62	440.5	73.93	1.05
CUMULATIVE CURVE DATA				
10	1	2	3	4
1	192.80	439.71	70.17	1.39
2	192.80	439.71	70.17	1.39
3	5.18	140.49	60.31	1.62
4	5.18	140.49	60.31	1.62
5	107.37	280	92.41	1.05
6	587.62	440.5	73.93	1.05
CUMULATIVE CURVE DATA				
10	1	2	3	4
1	192.80	439.71	70.17	1.39
2	192.80	439.71	70.17	1.39
3	5.18	140.49	60.31	1.62
4	5.18	140.49	60.31	1.62
5	107.37	280	92.41	1.05
6	587.62	440.5	73.93	1.05
CUMULATIVE CURVE DATA				
10	1	2	3	4
1	192.80	439.71	70.17	1.39
2	192.80	439.71	70.17	1.39
3	5.18	140.49	60.31	1.62
4	5.18	140.49	60.31	1.62
5	107.37	280	92.41	1.05
6	587.62	440.5	73.93	1.05
CUMULATIVE CURVE DATA				
10	1	2	3	4
1	192.80	439.71	70.17	1.39
2	192.80	439.71	70.17	1.39
3	5.18	140.49	60.31	1.62
4	5.18	140.49	60.31	1.62
5	107.37	280	92.41	1.05
6	587.62	440.5	73.93	1.05
CUMULATIVE CURVE DATA				
10	1	2	3	4
1	192.80	439.71	70.17	1.39
2	192.80	439.71	70.17	1.39
3	5.18	140.49	60.31	1.62
4	5.18	140.49	60.31	1.62
5	107.37	280	92.41	1.05
6	587.62	440.5	73.93	1.05
CUMULATIVE CURVE DATA				
10	1	2	3	4
1	192.80	439.71	70.17	1.39
2	192.80	439.71	70.17	1.39
3	5.18	140.49	60.31	1.62
4	5.18	140.49	60.31	1.62
5	107.37	280	92.41	1.05
6	587.62	440.5	73.93	1.05
CUMULATIVE CURVE DATA				
10	1	2	3	4
1	192.80	439.71	70.17	1.39
2	192.80	439.71	70.17	1.39
3	5.18	140.49	60.31	1.62
4	5.18	140.49	60.31	1.62
5	107.37	280	92.41	1.05
6	587.62	440.5	73.93	1.05
CUMULATIVE CURVE DATA				
10	1	2	3	4
1	192.80	439.71	70.17	1.39
2	192.80	439.71	70.17	1.39
3	5.18	140.49	60.31	1.62
4	5.18	140.49	60.31	1.62
5	107.37	280	92.41	1.05
6	587.62	440.5	73.93	1.05
CUMULATIVE CURVE DATA				
10	1	2	3	4
1	192.80	439.71	70.17	1.39
2	192.80	439.71	70.17	1.39
3	5.18	140.49	60.31	1.62
4	5.18	140.49	60.31	1.62
5	107.37	280	92.41	1.05
6	587.62	440.5	73.93	1.05
CUMULATIVE CURVE DATA				
10	1	2	3	4
1	192.80	439.71	70.17	1.39
2	192.80	439.71	70.17	1.39
3	5.18	140.49	60.31	1.62
4	5.18	140.49	60.31	1.62
5	107.37	280	92.41	1.05
6	587.62	440.5	73.93	1.05
CUMULATIVE CURVE DATA				
10	1	2	3	4
1	192.80	439.71	70.17	1.39
2	192.80	439.71	70.17	1.39
3	5.18	140.49	60.31	1.62
4	5.18	140.49	60.31	1.62
5	107.37	280	92.41	1.05
6	587.62	440.5	73.93	1.05
CUMULATIVE CURVE DATA				
10	1	2	3	4
1	192.80	439.71	70.17	1.39
2	192.80	439.71	70.17	1.39
3	5.18	140.49	60.31	1.62
4	5.18	140.49	60.31	1.62
5	107.37	280	92.41	1.05
6	587.62	440.5	73.93	1.05
CUMULATIVE CURVE DATA				
10	1	2	3	4
1	192.80	439.71	70.17	1.39
2	192.80	439.71	70.17	1.39
3	5.18	140.49	60.31	1.62
4	5.18	140.49	60.31	1.62
5	107.37	280	92.41	1.05
6	587.62	440.5	73.93	1.05
CUMULATIVE CURVE DATA				
10	1	2	3	4
1	192.80	439.71	70.17	1.39
2	192.80	439.71	70.17	1.39
3	5.18	140.49	60.31	1.62
4	5.18	140.49	60.31	1.62
5	107.37	280	92.41	1.05
6	587.62	440.5	73.93	1.05
CUMULATIVE CURVE DATA				
10	1	2	3	4
1	192.80	439.71	70.17	1.39
2	192.80	439.71	70.17	1.39
3	5.18	140.49	60.31	1.62
4	5.18	140.49	60.31	1.62
5	107.37	280	92.41	1.05
6	587.62	440.5	73.93	1.05
CUMULATIVE CURVE DATA				
10	1	2	3	4
1	192.80	439.71	70.17	1.39
2	192.80	439.71	70.17	1.39
3	5.18	140.49	60.31	1.62
4	5.18	140.49	60.31	1.62
5	107.37	280	92.41	1.05
6	587.62	440.5	73.93	1.05
CUMULATIVE CURVE DATA				
10	1	2	3	4
1	192.80	439.71	70.17	1.39
2	192.80	439.71	70.17	1.39
3	5.18	140.49	60.31	1.62
4	5.18	140.49	60.31	1.62
5	107.37	280	92.41	1.05
6	587.62	440.5	73.93	1.05
CUMULATIVE CURVE DATA				
10	1	2	3	4
1	192.80	439.71	70.17	1.39
2	192.80	439.71	70.17	1.39
3	5.18	140.49	60.31	1.62
4	5.18	140.49	60.31	1.62
5	107.37	280	92.41	1.05
6	587.62	440.5	73.93	1.05
CUMULATIVE CURVE DATA				
10	1	2	3	4
1	192.80	439.71	70.17	1.39
2	192.80	439.71	70.17	1.39
3	5.18	140.49	60.31	1.62
4	5.18	140.49	60.31	1.62
5	107.37	280	92.41	1.05
6	587.62	440.5	73.93	1.05
CUMULATIVE CURVE DATA				
10	1	2	3	4
1	192.80	439.71	70.17	1.39
2	192.80	439.71	70.17	1.39
3	5.18	140.49	60.31	1.62
4	5.18	140.49	60.31	1.62
5	107.37	280	92.41	1.05
6	587.62	440.5	73.93	1.05
CUMULATIVE CURVE DATA				
10	1	2	3	4
1	192.80	439.71	70.17	1.39
2	192.80	439.71	70.17	1.39
3	5.18	140.49	60.31	1.62
4	5.18	140.49	60.31	1.62
5	107.37	280	92.41	1.05
6	587.62	440.5	73.93	1.05
CUMULATIVE CURVE DATA				
10	1	2	3	4
1	192.80	439.71	70.17	1.39
2	192.80	439.71	70.17	1.39
3	5.18	140.49	60.31	1.62
4	5.18	140.49	60.31	1.62
5	107.37	280	92.41	1.05
6	587.62	440.5	73.93	1.05
CUMULATIVE CURVE DATA				
10	1	2	3	4
1	192.80	439.71	70.17	1.39
2	192.80	439.71	70.17	1.39
3	5.18	140.49	60.31	1.62
4	5.18	140.49	60.31	1.62
5	107.37	280	92.41	1.05
6	587.62	440.5	73.93	1.05
CUMULATIVE CURVE DATA				
10	1	2	3	4
1	192.80	439.71	70.17	1.39
2	192.80	439.71	70.17	1.39
3	5.18	140.49	60.31	1.62
4	5.18	140.49	60.31	1.62
5	107.37	280	92.41	1.05
6	587.62	440.5	73.93	1.05
CUMULATIVE CURVE DATA				
10	1	2	3	4
1				

[illegible]

32341

STATE OF OREGON
County of Deschutes

I hereby certify that the within instrument of writing was received for Record
the 12 day of June A.D. 19 80
at 3:45 o'clock P.M. and recorded
in Book 323 on Page 142 Records
of Seeds
ROSEMARY PATTERSON
County Clerk
By Rhonda Lantz Deputy