

DESCHUTES COUNTY OFFICIAL RECORDS
NANCY BLANKENSHIP, COUNTY CLERK

2003-21233



\$41.00

00150035200300212330040043

04/01/2003 09:12:11 AM

D-PCD Cnt=1 Stn=23 JEFF

\$15.00 \$11.00 \$10.00 \$5.00

DESCHUTES COUNTY CLERK

CERTIFICATE PAGE



**This page must be included
if document is re-recorded.
Do Not remove from original document.**

**SUPPLEMENTAL DECLARATION TO THE
DECLARATION OF COPPERSTONE TOWNHOMES
AT AWBREY GLEN**

THIS SUPPLEMENTAL DECLARATION is made this 27th day of March, 2003, by Copperstone Associates, L.L.C., an Oregon limited liability company ("Declarant").

WHEREAS Declarant previously recorded that Declaration of CopperStone Townhomes at Awbrey Glen ("CopperStone") as of June 13, 2002, which Declaration covered and pertained to Phase I of CopperStone; and

WHEREAS Article 2 of the Declaration provides for the annexation of certain additional property to CopperStone, and, further, provides that such annexed property, upon recordation of a Supplemental Declaration, "thereby become a part of CopperStone and subject to this Declaration, and the Declarant and the Association shall have and shall accept and exercise administration of this Declaration with respect to such property,"

NOW, THEREFORE,

1.0 Declarant hereby affixes its signature to this Supplemental Declaration and, upon recordation hereof, annexes that property described in Exhibit A, attached, to CopperStone, and provides that such annexed property shall be held, conveyed, hypothecated, encumbered, used, occupied, and improved subject to this Declaration.

2.0 This annexed property shall be known and referred to as CopperStone, Phase II.

3.0 Section 12.10(a) shall be amended to read:

Addresses. All notices and other communications under this Declaration shall be given to the parties hereto at the following addresses:

(i) If to an Owner, then to the last address for such Owner shown in the Association's records.

(ii) If to Declarant or to the Association, then to Declarant or the Association at:

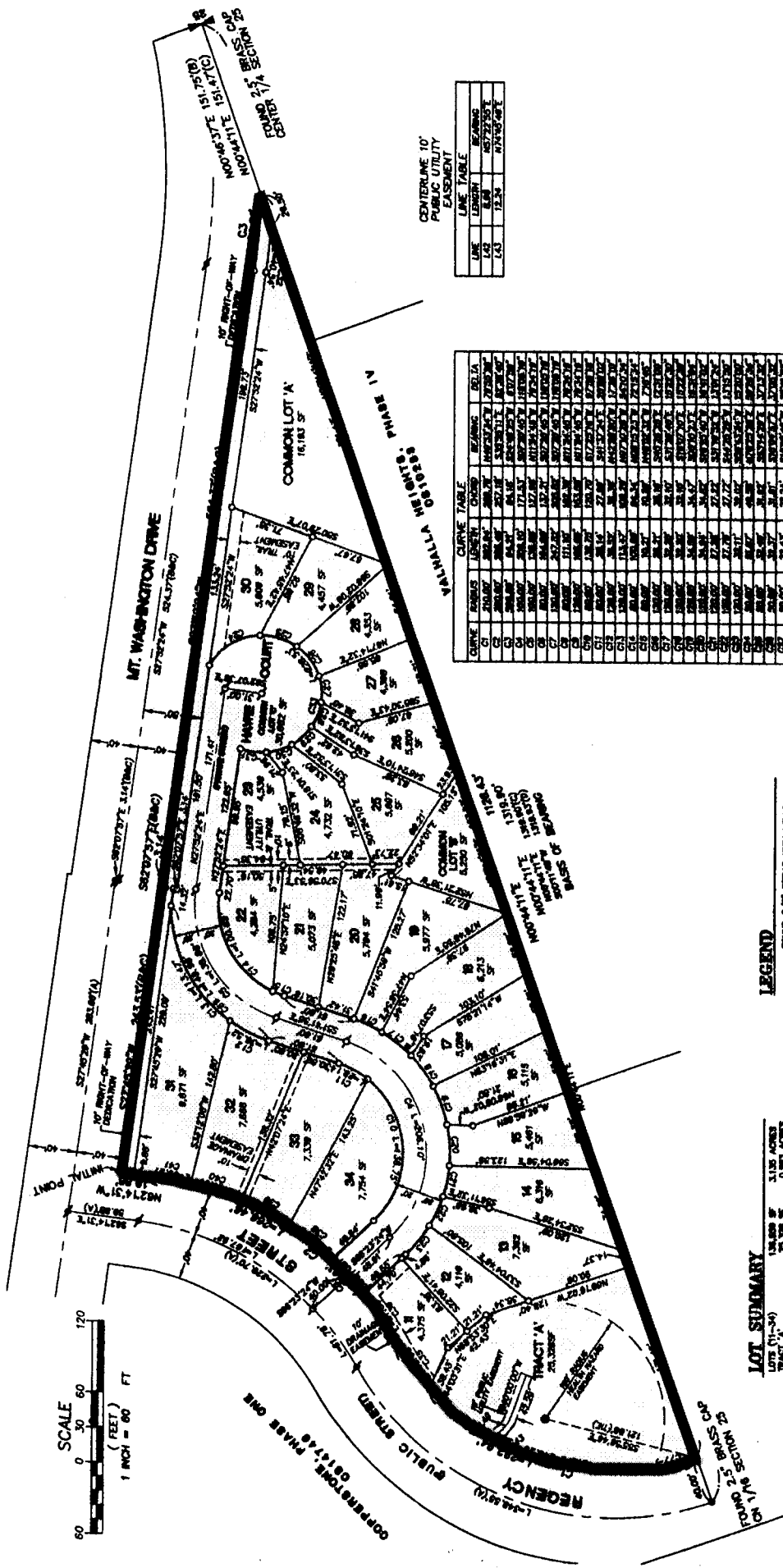
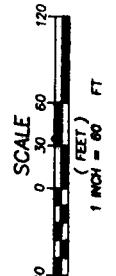
Copperstone Associates, L.L.C.
250 N.W. Franklin Avenue, Suite 204
Bend, Oregon 97701
Attn: Stephen John Robertson

4.0 All other terms and conditions of the Declaration shall remain unchanged and in full force and effect.

1
Tiger Verde
Kenneth B. B. B.
250 N.W. Franklin Ave #204
Bend, OR 97701

Exhibit A

COPPERSTONE, PHASES 2 AND 3
 LOCATED IN THE SOUTHWEST QUARTER OF THE NORTHEAST QUARTER OF SECTION 25,
 TOWNSHIP 17 SOUTH, RANGE 11 EAST, WILLAMETTE MERIDIAN, CITY OF BEND, DESCHUTES
 COUNTY, OREGON, NOVEMBER, 2002



CENTERLINE 10' PUBLIC UTILITY EASEMENT

LINE	BEARING	LENGTH
14.5	S 88° 12' 30\"	10.00
14.6	S 88° 12' 30\"	10.00
14.7	S 88° 12' 30\"	10.00

CURVE	RADIUS	CHORD	CHORD BEARING	AREA
C1	200.00	200.00	N 89° 58' 00\"	15,708.00
C2	200.00	200.00	S 89° 58' 00\"	15,708.00
C3	200.00	200.00	N 89° 58' 00\"	15,708.00
C4	200.00	200.00	S 89° 58' 00\"	15,708.00
C5	200.00	200.00	N 89° 58' 00\"	15,708.00
C6	200.00	200.00	S 89° 58' 00\"	15,708.00
C7	200.00	200.00	N 89° 58' 00\"	15,708.00
C8	200.00	200.00	S 89° 58' 00\"	15,708.00
C9	200.00	200.00	N 89° 58' 00\"	15,708.00
C10	200.00	200.00	S 89° 58' 00\"	15,708.00
C11	200.00	200.00	N 89° 58' 00\"	15,708.00
C12	200.00	200.00	S 89° 58' 00\"	15,708.00
C13	200.00	200.00	N 89° 58' 00\"	15,708.00
C14	200.00	200.00	S 89° 58' 00\"	15,708.00
C15	200.00	200.00	N 89° 58' 00\"	15,708.00
C16	200.00	200.00	S 89° 58' 00\"	15,708.00
C17	200.00	200.00	N 89° 58' 00\"	15,708.00
C18	200.00	200.00	S 89° 58' 00\"	15,708.00
C19	200.00	200.00	N 89° 58' 00\"	15,708.00
C20	200.00	200.00	S 89° 58' 00\"	15,708.00
C21	200.00	200.00	N 89° 58' 00\"	15,708.00
C22	200.00	200.00	S 89° 58' 00\"	15,708.00
C23	200.00	200.00	N 89° 58' 00\"	15,708.00
C24	200.00	200.00	S 89° 58' 00\"	15,708.00
C25	200.00	200.00	N 89° 58' 00\"	15,708.00
C26	200.00	200.00	S 89° 58' 00\"	15,708.00
C27	200.00	200.00	N 89° 58' 00\"	15,708.00
C28	200.00	200.00	S 89° 58' 00\"	15,708.00
C29	200.00	200.00	N 89° 58' 00\"	15,708.00
C30	200.00	200.00	S 89° 58' 00\"	15,708.00
C31	200.00	200.00	N 89° 58' 00\"	15,708.00
C32	200.00	200.00	S 89° 58' 00\"	15,708.00
C33	200.00	200.00	N 89° 58' 00\"	15,708.00
C34	200.00	200.00	S 89° 58' 00\"	15,708.00
C35	200.00	200.00	N 89° 58' 00\"	15,708.00
C36	200.00	200.00	S 89° 58' 00\"	15,708.00
C37	200.00	200.00	N 89° 58' 00\"	15,708.00
C38	200.00	200.00	S 89° 58' 00\"	15,708.00
C39	200.00	200.00	N 89° 58' 00\"	15,708.00
C40	200.00	200.00	S 89° 58' 00\"	15,708.00
C41	200.00	200.00	N 89° 58' 00\"	15,708.00
C42	200.00	200.00	S 89° 58' 00\"	15,708.00
C43	200.00	200.00	N 89° 58' 00\"	15,708.00
C44	200.00	200.00	S 89° 58' 00\"	15,708.00
C45	200.00	200.00	N 89° 58' 00\"	15,708.00
C46	200.00	200.00	S 89° 58' 00\"	15,708.00
C47	200.00	200.00	N 89° 58' 00\"	15,708.00
C48	200.00	200.00	S 89° 58' 00\"	15,708.00
C49	200.00	200.00	N 89° 58' 00\"	15,708.00
C50	200.00	200.00	S 89° 58' 00\"	15,708.00
C51	200.00	200.00	N 89° 58' 00\"	15,708.00
C52	200.00	200.00	S 89° 58' 00\"	15,708.00
C53	200.00	200.00	N 89° 58' 00\"	15,708.00
C54	200.00	200.00	S 89° 58' 00\"	15,708.00
C55	200.00	200.00	N 89° 58' 00\"	15,708.00
C56	200.00	200.00	S 89° 58' 00\"	15,708.00
C57	200.00	200.00	N 89° 58' 00\"	15,708.00
C58	200.00	200.00	S 89° 58' 00\"	15,708.00
C59	200.00	200.00	N 89° 58' 00\"	15,708.00
C60	200.00	200.00	S 89° 58' 00\"	15,708.00
C61	200.00	200.00	N 89° 58' 00\"	15,708.00
C62	200.00	200.00	S 89° 58' 00\"	15,708.00
C63	200.00	200.00	N 89° 58' 00\"	15,708.00
C64	200.00	200.00	S 89° 58' 00\"	15,708.00
C65	200.00	200.00	N 89° 58' 00\"	15,708.00
C66	200.00	200.00	S 89° 58' 00\"	15,708.00
C67	200.00	200.00	N 89° 58' 00\"	15,708.00
C68	200.00	200.00	S 89° 58' 00\"	15,708.00
C69	200.00	200.00	N 89° 58' 00\"	15,708.00
C70	200.00	200.00	S 89° 58' 00\"	15,708.00
C71	200.00	200.00	N 89° 58' 00\"	15,708.00
C72	200.00	200.00	S 89° 58' 00\"	15,708.00
C73	200.00	200.00	N 89° 58' 00\"	15,708.00
C74	200.00	200.00	S 89° 58' 00\"	15,708.00
C75	200.00	200.00	N 89° 58' 00\"	15,708.00
C76	200.00	200.00	S 89° 58' 00\"	15,708.00
C77	200.00	200.00	N 89° 58' 00\"	15,708.00
C78	200.00	200.00	S 89° 58' 00\"	15,708.00
C79	200.00	200.00	N 89° 58' 00\"	15,708.00
C80	200.00	200.00	S 89° 58' 00\"	15,708.00
C81	200.00	200.00	N 89° 58' 00\"	15,708.00
C82	200.00	200.00	S 89° 58' 00\"	15,708.00
C83	200.00	200.00	N 89° 58' 00\"	15,708.00
C84	200.00	200.00	S 89° 58' 00\"	15,708.00
C85	200.00	200.00	N 89° 58' 00\"	15,708.00
C86	200.00	200.00	S 89° 58' 00\"	15,708.00
C87	200.00	200.00	N 89° 58' 00\"	15,708.00
C88	200.00	200.00	S 89° 58' 00\"	15,708.00
C89	200.00	200.00	N 89° 58' 00\"	15,708.00
C90	200.00	200.00	S 89° 58' 00\"	15,708.00
C91	200.00	200.00	N 89° 58' 00\"	15,708.00
C92	200.00	200.00	S 89° 58' 00\"	15,708.00
C93	200.00	200.00	N 89° 58' 00\"	15,708.00
C94	200.00	200.00	S 89° 58' 00\"	15,708.00
C95	200.00	200.00	N 89° 58' 00\"	15,708.00
C96	200.00	200.00	S 89° 58' 00\"	15,708.00
C97	200.00	200.00	N 89° 58' 00\"	15,708.00
C98	200.00	200.00	S 89° 58' 00\"	15,708.00
C99	200.00	200.00	N 89° 58' 00\"	15,708.00
C100	200.00	200.00	S 89° 58' 00\"	15,708.00

LEGEND

- FOUND 5/8\" REBAR WITH YELLOW PLASTIC CAP MARKED \"WHY PACIFIC\" UNLESS OTHERWISE NOTED
- SET 5/8\" REBAR WITH YELLOW PLASTIC CAP MARKED \"WHY PACIFIC\" UNLESS OTHERWISE NOTED
- SET 5/8\" REBAR WITH ALUMINUM CAP MARKED \"WHY PACIFIC\" UNLESS OTHERWISE NOTED
- () RECORD DATA PER REFERENCE NOTED
- ||| PUBLIC UTILITY EASEMENT
- |||| ACCESS EASEMENT

LOT SUMMARY

LOTS 11-24
 11,200 SF 3,125 ACRES
 25,000 SF 725 ACRES
 30,000 SF 875 ACRES
 35,000 SF 1,000 ACRES
 40,000 SF 1,125 ACRES
 45,000 SF 1,250 ACRES
 50,000 SF 1,375 ACRES
 55,000 SF 1,500 ACRES
 60,000 SF 1,625 ACRES
 65,000 SF 1,750 ACRES
 70,000 SF 1,875 ACRES
 75,000 SF 2,000 ACRES
 80,000 SF 2,125 ACRES
 85,000 SF 2,250 ACRES
 90,000 SF 2,375 ACRES
 95,000 SF 2,500 ACRES
 100,000 SF 2,625 ACRES
 105,000 SF 2,750 ACRES
 110,000 SF 2,875 ACRES
 115,000 SF 3,000 ACRES
 120,000 SF 3,125 ACRES
 125,000 SF 3,250 ACRES
 130,000 SF 3,375 ACRES
 135,000 SF 3,500 ACRES
 140,000 SF 3,625 ACRES
 145,000 SF 3,750 ACRES
 150,000 SF 3,875 ACRES
 155,000 SF 4,000 ACRES
 160,000 SF 4,125 ACRES
 165,000 SF 4,250 ACRES
 170,000 SF 4,375 ACRES
 175,000 SF 4,500 ACRES
 180,000 SF 4,625 ACRES
 185,000 SF 4,750 ACRES
 190,000 SF 4,875 ACRES
 195,000 SF 5,000 ACRES
 200,000 SF 5,125 ACRES
 205,000 SF 5,250 ACRES
 210,000 SF 5,375 ACRES
 215,000 SF 5,500 ACRES
 220,000 SF 5,625 ACRES
 225,000 SF 5,750 ACRES
 230,000 SF 5,875 ACRES
 235,000 SF 6,000 ACRES
 240,000 SF 6,125 ACRES
 245,000 SF 6,250 ACRES
 250,000 SF 6,375 ACRES
 255,000 SF 6,500 ACRES
 260,000 SF 6,625 ACRES
 265,000 SF 6,750 ACRES
 270,000 SF 6,875 ACRES
 275,000 SF 7,000 ACRES
 280,000 SF 7,125 ACRES
 285,000 SF 7,250 ACRES
 290,000 SF 7,375 ACRES
 295,000 SF 7,500 ACRES
 300,000 SF 7,625 ACRES
 305,000 SF 7,750 ACRES
 310,000 SF 7,875 ACRES
 315,000 SF 8,000 ACRES
 320,000 SF 8,125 ACRES
 325,000 SF 8,250 ACRES
 330,000 SF 8,375 ACRES
 335,000 SF 8,500 ACRES
 340,000 SF 8,625 ACRES
 345,000 SF 8,750 ACRES
 350,000 SF 8,875 ACRES
 355,000 SF 9,000 ACRES
 360,000 SF 9,125 ACRES
 365,000 SF 9,250 ACRES
 370,000 SF 9,375 ACRES
 375,000 SF 9,500 ACRES
 380,000 SF 9,625 ACRES
 385,000 SF 9,750 ACRES
 390,000 SF 9,875 ACRES
 395,000 SF 10,000 ACRES
 400,000 SF 10,125 ACRES
 405,000 SF 10,250 ACRES
 410,000 SF 10,375 ACRES
 415,000 SF 10,500 ACRES
 420,000 SF 10,625 ACRES
 425,000 SF 10,750 ACRES
 430,000 SF 10,875 ACRES
 435,000 SF 11,000 ACRES
 440,000 SF 11,125 ACRES
 445,000 SF 11,250 ACRES
 450,000 SF 11,375 ACRES
 455,000 SF 11,500 ACRES
 460,000 SF 11,625 ACRES
 465,000 SF 11,750 ACRES
 470,000 SF 11,875 ACRES
 475,000 SF 12,000 ACRES
 480,000 SF 12,125 ACRES
 485,000 SF 12,250 ACRES
 490,000 SF 12,375 ACRES
 495,000 SF 12,500 ACRES
 500,000 SF 12,625 ACRES
 505,000 SF 12,750 ACRES
 510,000 SF 12,875 ACRES
 515,000 SF 13,000 ACRES
 520,000 SF 13,125 ACRES
 525,000 SF 13,250 ACRES
 530,000 SF 13,375 ACRES
 535,000 SF 13,500 ACRES
 540,000 SF 13,625 ACRES
 545,000 SF 13,750 ACRES
 550,000 SF 13,875 ACRES
 555,000 SF 14,000 ACRES
 560,000 SF 14,125 ACRES
 565,000 SF 14,250 ACRES
 570,000 SF 14,375 ACRES
 575,000 SF 14,500 ACRES
 580,000 SF 14,625 ACRES
 585,000 SF 14,750 ACRES
 590,000 SF 14,875 ACRES
 595,000 SF 15,000 ACRES
 600,000 SF 15,125 ACRES
 605,000 SF 15,250 ACRES
 610,000 SF 15,375 ACRES
 615,000 SF 15,500 ACRES
 620,000 SF 15,625 ACRES
 625,000 SF 15,750 ACRES
 630,000 SF 15,875 ACRES
 635,000 SF 16,000 ACRES
 640,000 SF 16,125 ACRES
 645,000 SF 16,250 ACRES
 650,000 SF 16,375 ACRES
 655,000 SF 16,500 ACRES
 660,000 SF 16,625 ACRES
 665,000 SF 16,750 ACRES
 670,000 SF 16,875 ACRES
 675,000 SF 17,000 ACRES
 680,000 SF 17,125 ACRES
 685,000 SF 17,250 ACRES
 690,000 SF 17,375 ACRES
 695,000 SF 17,500 ACRES
 700,000 SF 17,625 ACRES
 705,000 SF 17,750 ACRES
 710,000 SF 17,875 ACRES
 715,000 SF 18,000 ACRES
 720,000 SF 18,125 ACRES
 725,000 SF 18,250 ACRES
 730,000 SF 18,375 ACRES
 735,000 SF 18,500 ACRES
 740,000 SF 18,625 ACRES
 745,000 SF 18,750 ACRES
 750,000 SF 18,875 ACRES
 755,000 SF 19,000 ACRES
 760,000 SF 19,125 ACRES
 765,000 SF 19,250 ACRES
 770,000 SF 19,375 ACRES
 775,000 SF 19,500 ACRES
 780,000 SF 19,625 ACRES
 785,000 SF 19,750 ACRES
 790,000 SF 19,875 ACRES
 795,000 SF 20,000 ACRES
 800,000 SF 20,125 ACRES
 805,000 SF 20,250 ACRES
 810,000 SF 20,375 ACRES
 815,000 SF 20,500 ACRES
 820,000 SF 20,625 ACRES
 825,000 SF 20,750 ACRES
 830,000 SF 20,875 ACRES
 835,000 SF 21,000 ACRES
 840,000 SF 21,125 ACRES
 845,000 SF 21,250 ACRES
 850,000 SF 21,375 ACRES
 855,000 SF 21,500 ACRES
 860,000 SF 21,625 ACRES
 865,000 SF 21,750 ACRES
 870,000 SF 21,875 ACRES
 875,000 SF 22,000 ACRES
 880,000 SF 22,125 ACRES
 885,000 SF 22,250 ACRES
 890,000 SF 22,375 ACRES
 895,000 SF 22,500 ACRES
 900,000 SF 22,625 ACRES
 905,000 SF 22,750 ACRES
 910,000 SF 22,875 ACRES
 915,000 SF 23,000 ACRES
 920,000 SF 23,125 ACRES
 925,000 SF 23,250 ACRES
 930,000 SF 23,375 ACRES
 935,000 SF 23,500 ACRES
 940,000 SF 23,625 ACRES
 945,000 SF 23,750 ACRES
 950,000 SF 23,875 ACRES
 955,000 SF 24,000 ACRES
 960,000 SF 24,125 ACRES
 965,000 SF 24,250 ACRES
 970,000 SF 24,375 ACRES
 975,000 SF 24,500 ACRES
 980,000 SF 24,625 ACRES
 985,000 SF 24,750 ACRES
 990,000 SF 24,875 ACRES
 995,000 SF 25,000 ACRES
 1,000,000 SF 25,125 ACRES
 1,005,000 SF 25,250 ACRES
 1,010,000 SF 25,375 ACRES
 1,015,000 SF 25,500 ACRES
 1,020,000 SF 25,625 ACRES
 1,025,000 SF 25,750 ACRES
 1,030,000 SF 25,875 ACRES
 1,035,000 SF 26,000 ACRES
 1,040,000 SF 26,125 ACRES
 1,045,000 SF 26,250 ACRES
 1,050,000 SF 26,375 ACRES
 1,055,000 SF 26,500 ACRES
 1,060,000 SF 26,625 ACRES
 1,065,000 SF 26,750 ACRES
 1,070,000 SF 26,875 ACRES
 1,075,000 SF 27,000 ACRES
 1,080,000 SF 27,125 ACRES
 1,085,000 SF 27,250 ACRES
 1,090,000 SF 27,375 ACRES
 1,095,000 SF 27,500 ACRES
 1,100,000 SF 27,625 ACRES
 1,105,000 SF 27,750 ACRES
 1,110,000 SF 27,875 ACRES
 1,115,000 SF 28,000 ACRES
 1,120,000 SF 28,125 ACRES
 1,125,000 SF 28,250 ACRES
 1,130,000 SF 28,375 ACRES
 1,135,000 SF 28,500 ACRES
 1,140,000 SF 28,625 ACRES
 1,