

Name of Plot: *[Handwritten Signature]*

H-216

DESCHUTES COUNTY OFFICIAL RECORDS
 REC'D PLANS - COUNTY CLERK
 2007-03751

\$11.00

RECORDED
 01/22/2007 11:59:44 AM
 01/22/2007 11:59:44 AM
 \$30.00 \$11.00 \$10.00

AMERICAN LANE INDUSTRIAL PARK PHASE II

PZ 01-32 NOVEMBER 28, 2006
 LOCATED IN THE SW 1/4 NE 1/4
 OF SECTION 9, TOWNSHIP 18 SOUTH,
 RANGE 12 EAST, WILAMETTE MERIDIAN,
 CITY OF BEND, DESCHUTES COUNTY, OREGON

LINE	BEARING	LENGTH
L1	N007°28'E	41.41'
L2	N08°37'28"E	7.01'
L3	N08°37'28"E	20.00'
L4	S87°28'27"E	30.16'
L5	S87°28'27"E	20.00'
L6	S87°28'27"E	30.87'
L7	S02°26'23"E	20.00'
L8	S08°33'21"W	20.00'
L9	S87°28'27"E	30.37'
L10	N08°37'28"E	6.87'
L11	N08°37'28"E	20.00'
L12	S08°37'28"E	20.00'
L13	N08°37'28"E	30.81'
L14	N08°37'28"E	7.00'
L15	N08°37'28"E	30.81'
L16	N08°37'28"E	20.00'
L17	N08°37'28"E	20.00'
L18	N08°37'28"E	20.00'
L19	N08°37'28"E	20.00'
L20	N08°37'28"E	20.00'
L21	N08°37'28"E	20.00'
L22	N08°37'28"E	20.00'
L23	N08°37'28"E	14.82'
L24	N08°37'28"E	14.82'
L25	N08°37'28"E	20.00'

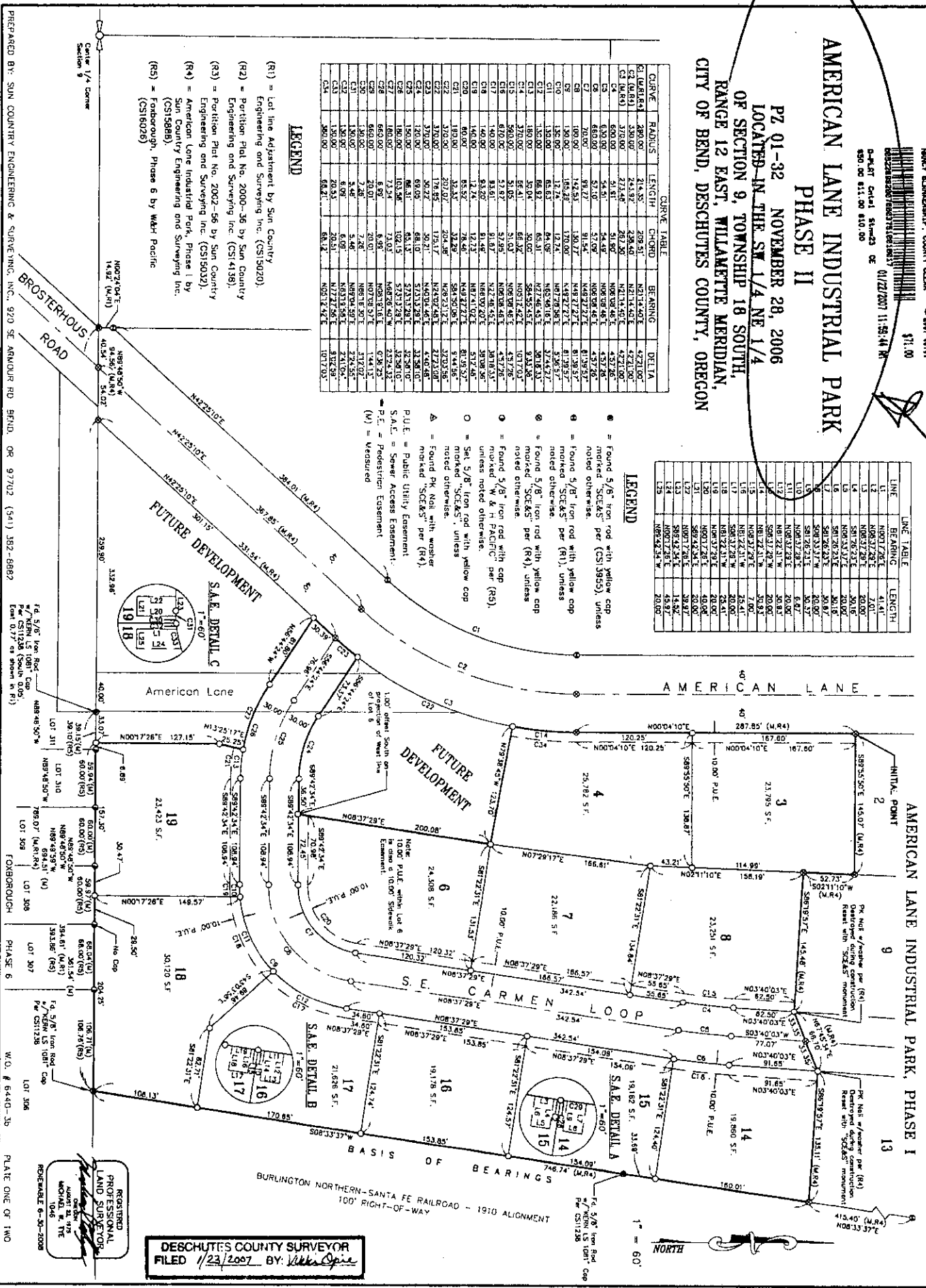
LEGEND

- = Found 5/8" iron rod with yellow cap marked "SCE&S" per (CS13855), unless noted otherwise.
- = Found 5/8" iron rod with yellow cap marked "SCE&S" per (R1), unless noted otherwise.
- ⊗ = Found 5/8" iron rod with yellow cap marked "SCE&S" per (R4), unless noted otherwise.
- ⊙ = Found 5/8" iron rod with yellow cap marked "W & H PACIFIC" per (R2).
- = Set 5/8" iron rod with yellow cap marked "SCE&S", unless noted otherwise.
- △ = Found PK Nail with washer marked "SCE&S" per (R4).
- = Public Utility Easement.
- ▭ = Sewer Access Easement.
- P.E. = Pedestrian Easement.
- (V) = Measured.

CURVE	RADIUS	LENGTH	CHORD	BEARING	DELTA
C1 (L&R)	280.00'	214.93'	208.51'	N21°14'40"E	42°21'00"
C2 (L&R)	330.00'	243.97'	238.48'	N21°14'40"E	42°21'00"
C3 (L&R)	370.00'	272.48'	267.00'	N21°14'40"E	42°21'00"
C4	600.00'	51.81'	51.80'	N08°00'48"E	43°37'26"
C5	600.00'	51.81'	51.80'	N08°00'48"E	43°37'26"
C6	600.00'	51.81'	51.80'	N08°00'48"E	43°37'26"
C7	200.00'	88.22'	81.94'	N48°27'27"E	61°39'57"
C8	100.00'	142.51'	130.27'	N48°27'27"E	61°39'57"
C9	150.00'	165.28'	170.00'	N48°27'27"E	61°39'57"
C10	150.00'	12.74'	12.74'	N07°28'17"E	33°58'57"
C11	150.00'	66.63'	64.98'	N05°46'16"E	32°44'47"
C12	150.00'	66.63'	64.98'	N05°46'16"E	32°44'47"
C13	150.00'	66.63'	64.98'	N05°46'16"E	32°44'47"
C14	300.00'	66.41'	66.32'	N05°12'42"E	31°27'26"
C15	300.00'	51.05'	51.05'	N06°08'46"E	43°37'26"
C16	670.00'	57.87'	57.87'	N06°08'46"E	43°37'26"
C17	140.00'	33.61'	33.61'	N06°08'46"E	43°37'26"
C18	140.00'	33.61'	33.61'	N06°08'46"E	43°37'26"
C19	140.00'	33.61'	33.61'	N06°08'46"E	43°37'26"
C20	140.00'	33.61'	33.61'	N06°08'46"E	43°37'26"
C21	180.00'	32.33'	32.28'	N04°50'06"E	40°17'03"
C22	370.00'	202.02'	204.38'	N42°02'12"E	37°03'56"
C23	370.00'	176.55'	179.17'	N42°02'12"E	37°03'56"
C24	370.00'	30.27'	30.27'	N42°02'12"E	37°03'56"
C25	120.00'	69.05'	68.10'	S71°53'28"E	33°58'10"
C26	120.00'	69.05'	68.10'	S71°53'28"E	33°58'10"
C27	180.00'	103.56'	103.15'	S71°53'28"E	33°58'10"
C28	180.00'	123.54'	124.03'	N04°26'40"W	23°34'32"
C29	660.00'	6.95'	6.95'	N08°18'16"E	0°38'25"
C30	660.00'	20.01'	20.01'	N07°08'57"E	14°11'11"
C31	120.00'	7.46'	7.46'	N08°18'30"E	17°02'00"
C32	120.00'	8.46'	8.46'	N09°04'59"E	12°45'55"
C33	120.00'	20.51'	20.51'	N22°27'26"E	31°27'26"
C34	200.00'	66.21'	66.21'	N05°12'42"E	10°17'03"

LEGEND

- (R1) = Lot line Adjustment by Sun County Engineering and Surveying Inc. (CS150203)
- (R2) = Portion Plat No. 2000-36 by Sun County Engineering and Surveying Inc. (CS141381)
- (R3) = Portion Plat No. 2002-56 by Sun County Engineering and Surveying Inc. (CS150022)
- (R4) = American Lane Industrial Park, Phase I by Sun County Engineering and Surveying Inc. (CS150883)
- (R5) = Foxborough, Phase 6 by W&H Pacific (CS16026)



DESCHUTES COUNTY SURVEYOR
 FILED 1/23/2007 BY: *[Signature]*

PREPARED BY: SUN COUNTY ENGINEERING & SURVEYING, INC., 920 SE ARMOUR RD BRND, OR 97702 (341) 382-6882
 CS17202
 REGISTERED PROFESSIONAL LAND SURVEYOR
 W. H. P. 1046
 EXPIRES 6-30-2008
 PLATE ONE OF TWO